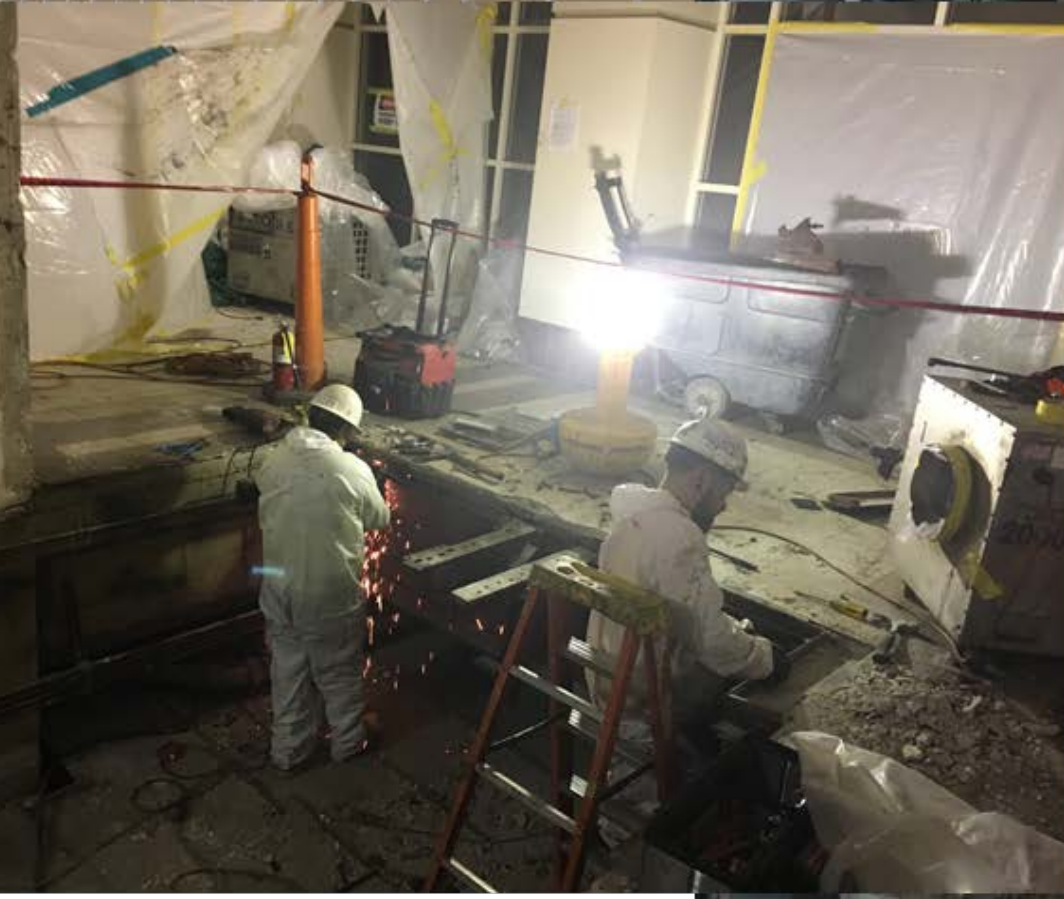




**UNLIMITED**  
**Environmental, Inc.**

1390 32<sup>nd</sup> Street  
Signal Hill, CA 90755

(562)981-6600 Office  
(562)981-2218 Fax  
[www.ueiteam.com](http://www.ueiteam.com)





# **Table of Contents**

- Firm Overview
- Key Staff
- Services
- Licensing & Insurance
- References
- Major Projects Completed



## **Firm Overview**

---

**Unlimited Environmental, Inc. (UEI)** is a Southern California based contracting firm. Since 1996, **UEI** has been providing Demolition, Asbestos, Lead, and Mold Remediation to a wide variety of clients. With over 150 employees in the greater Southern California area, **UEI** has the capabilities and resources to service the entire West Coast Region.

1390 32<sup>nd</sup> St.  
Signal Hill, CA 90755  
Office (562) 981-6600  
Fax (562) 981-2218  
[www.UEIteam.com](http://www.UEIteam.com)

**UEI** understands the importance of each project; we are committed to improving the environment one project at a time by working with local contractors, cities, and government agencies to create a clean and safe place to live and work.

### **Mission Statement**

***UEI** will strive to provide quality value-added services to our customers by creating a successful partnership with them throughout the construction process. We will maintain the highest level of professionalism, safety, dependability, honesty and fairness in our relationships with our employees, customers, suppliers, and subcontractors.*

*We will perform for our customers the highest level of quality construction services at fair and market competitive prices. We will continue to work on establishing lasting relationships with our customers by exceeding their expectations and gaining their trust through exceptional performance by every member of our company.*

**Unlimited Environmental, Inc.** takes great pride in being a leader in the environmental remediation and demolition industry. We have proven to be a strong, committed competitor within our industry and have developed a front-runner reputation for quality service. Our goal is to dedicate ourselves to completing our projects on time, on budget, and keeping safety at the forefront of everything we do. Unlimited Environmental, Inc. has a team that is experienced, has a strong passion for quality, and is dedicated to 100% customer satisfaction.

## **Key Staff**

---

### **W. Scott Lange – President – [scott@ueiteam.com](mailto:scott@ueiteam.com)**

Scott has over 20 years of experience in all aspects of commercial, industrial construction and Environmental Remediation Projects. He is involved in all daily matters of UEI's projects, staff, and the overall quality of the services provided.

### **Jill Dupleich – Vice President – [Jill@ueiteam.com](mailto:Jill@ueiteam.com)**

Jill oversees all daily operations and is responsible for developing, coordinating, and maintaining an integrated system of financial support services. With her 20 years of financial experience, Jill ensures the integrity of Unlimited Environmental.

### **Raj Maniar – Financial Controller – [Raj@ueiteam.com](mailto:Raj@ueiteam.com)**

As UEI's Financial Controller, Raj Maniar undertakes all aspects of financial management, including all corporate accounting, regulatory and financial reporting, budget and forecasts preparation, risk management, as well as development of internal control policies and procedures. Raj brings over 25 years of corporate financial construction experience to our team. He manages key operating metrics and business drivers that result in optimizing UEI's financial performance, overall business growth, and profitability.

### **Rick Jinkins– Sales Director – [Rick@ueiteam.com](mailto:Rick@ueiteam.com)**

A highly skilled VP of Sales and Estimating with over 20 years of experience in the construction, renewables & environmental, real estate and property development, labor management, and outsourcing industries. Mr. Jinkins' broad areas of expertise include construction, demolition, budgets, renovation, environmental remediation, process improvements, contract negotiations, project planning, P&L management, value engineering, talent management, and labor force management. Mr. Jinkins is a seasoned veteran with experience in managing sales and estimating for multiple abatement and demolition branches across the county.

### **Justin Temple – Operations Manager- [Justin@ueiteam.com](mailto:Justin@ueiteam.com)**

Justin has 25 years of management and sales experience within the construction industry. He plans, directs and coordinates all of UEI's operations. Justin is responsible for improving performance, productivity, efficiency and profitability through the implementation of effective methods and strategies. He ensures overall safety and quality control for UEI. He also manages all field and warehouse operations for both the abatement and demolition divisions within UEI. Justin has a strong sense of determination and ensures all projects are performed safely, on time, and within budgets.

### **Rob Samson – Senior Estimator – [Rob@ueiteam.com](mailto:Rob@ueiteam.com)**

Rob has been directly involved in over 20 million square feet of asbestos and lead abatement during his career. Additionally, he represents more than 30 years of environmental and general construction management experience. As UEI's senior estimator, Rob has enjoyed the opportunity to bid and work with a diverse range of projects from the Veterans Administration, school districts, commercial high rises, industrial sites, high security government facilities, and county projects.

### **Emmanuel Torres – Estimator– [Emmanuel@ueiteam.com](mailto:Emmanuel@ueiteam.com)**

Emmanuel has been in the demolition and construction industry for over 5 years and has successfully been awarded over 5 million square feet of demolition. He performs nearly all of UEI project take offs, bid coordination, and submittals. He has a very accomplished track record of being assertive, detail oriented, and highly organized. Emmanuel is very dedicated to maintaining a high level of professionalism with UEI clients and is always looking forward to the next project challenge.

## **SERVICES**

- Demolition Services
- Asbestos Abatement
- Lead Abatement
- Mold Abatement
- Remediation
- Industrial Services
- General Contracting





## Services

---

UEI provides Demolition and Remediation services to schools, universities, federal and state buildings, apartments, commercial buildings, hospitals, industrial facilities, and shopping centers. Major clients include:

- Sundt Construction
- Balfour Beatty Construction
- MTM Construction
- Northrop Grumman
- Aerojet
- U.C.L.A.
- Newport Beach USD
- JP Morgan Chase
- Providence Medical Center
- Warner Brothers
- FoodPro Int.
- Boeing North America
- Long Beach Unified School
- District Veterans Administration
- Metropolitan Water District
- Metropolitan Transportation Authority
- SoCalGas/ SEMPRAs Utilities

UEI's staff represents over 60 years of combined experience in environmental remediation and demolition in Southern California. Our field employees are AHERA/DHS trained and certified, and have extensive first hand experience in all phases of Asbestos, Lead, and Mold Abatement and Demolition Services.

Service to our customers is our top priority. From small crews performing critically sensitive abatement work in difficult or hostile environments, to large workforces dedicated to finishing major projects on time and on budget. We pride ourselves on outstanding performance and working safely at all times.

**Unlimited Environmental, Inc.** wishes to become an integral part of your Demolition and Environmental contractor resource file. Please keep this information package for future reference. If we may be of assistance in any way, please contact us at **(562) 981-6600**.

## **General Contracting**

Unlimited Environmental, Inc. (UEI) is a General Contractor, specializing in demolition and all aspects of hazmat services. In conjunction with your demolition project, UEI offers a complete turnkey package, including asbestos, lead, and mold abatement and remediation services.

UEI pledges to make safety first and has developed a safety program that includes thorough safety orientations and worker awareness of all state, federal, OSHA and EPA requirements coupled with a complete team focus on injury prevention. In our efforts to maintain a safe worksite, safety is UEI's number one priority. All projects reflect this commitment to a safe work environment for both UEI personnel and building owner's representatives.

UEI is fully bonded and maintains ample insurance coverage to assure protection for our clients. You can count on our professional and experienced crews to complete your next project to 100% satisfaction.



## **Asbestos Abatement**

Asbestos, was heavily used throughout the building industry until it was discovered that exposure to asbestos fibers caused a myriad of respiratory infections and other diseases. Asbestos affects most demolition and remodeling projects in buildings, which were erected prior to 1980.

We have a wide degree of experience in all forms of asbestos abatement. From assisting other trades with operations within asbestos work areas, to the abatement of asbestos from high-rise buildings and high-security areas, we have extensive experience in virtually every phase of this complex and important industry.



## **Lead Asbestos**

Similar to asbestos, the use of lead in building materials remains a threat- especially to children and infants. Whether it's removing lead covered building components, stabilizing lead based paint, or stripping lead paint in place, UEI has performed lead paint abatement throughout Southern California for a host of clients.

We have abundant experience in many of the various removal methodologies involved in lead paint abatement. From mechanical and chemical stripping to component removal and replacements, we have the hands on experience to deliver a safe and timely lead abatement project.



## **Mold Remediation**

Microbial contamination is a result of persistent dampness caused by water damage, and may take place over a long period of time- or just a matter of days, depending on atmospheric conditions. Currently, there are no regulations pertaining to the remediation of microbial contamination. However, remediation methods are available, and vary depending on type of fungus, extent of damages, location and exposure.

We are constantly updating our remediation procedures and all of our Supervisors partake in Mold Remediation classes to refresh their knowledge of the growing problem of mold and the different techniques and practices used.



## **Demolition**

At Unlimited Environmental, Inc. we perform a wide range of demolition services including but not limited to, industrial, commercial, military, interior demolition, plant decommissioning and dismantlement, salvage/asset recovery, contaminated soil excavation and AST/UST tank pulls.

We are willing to take on small jobs, as well as large scale projects. Our largest demolition project to date was the Sunkist Orange Growers Plant in Ontario, CA. This project included the demolition of nineteen (19) buildings on fifteen (15) acres, asbestos abatement of over one million square feet, and removal of 41,000 cubic feet of contaminated soil.

For further information regarding our demolition services, please contact Rick Jinkins or Emmanuel Torres in our estimating department.



# Licensing and Insurance

---

Licenses held by **Unlimited Environmental, Inc.** include:

❖ California State Contractors License# 668511

B (General Building)

C-21 (Building Moving, Demolition)

C-22 (Asbestos Abatement)

ASB (Asbestos)

HAZ (Hazardous Substance Removal)

❖ SBE Certified

State of CA - Certification# 46630

County of Los Angeles – Certification# 10477901

City of Long Beach – Certification# 193061

❖ DOSH# 523

❖ SCAQMD# 105314

❖ EPA Certified Asbestos Supervisor/ Contractor (RSC 1931)

❖ DIR Registration# 1000001068

❖ Department of Toxic Substances Control (DTSC)

Hazardous Waste Transporter Registration# 5120

❖ Insurance Broker:

Megan Hilke

Senior Account Manager Legends

Millennium Corporate Solutions

5530 Trabuco Road

Irvine, CA 92620

[MHilke@mcsins.com](mailto:MHilke@mcsins.com)

Office- (818)844.4118

❖ Bonding Surety:

International Fidelity Insurance Company

One Newark Center, 20<sup>th</sup> Floor Newark, New

Jersey 070102-5207

Currently Rated As: A+ Financial

Classification VII

Contact:

William Syrkin

(818)203-0408

[wsyrkin@mcins.com](mailto:wsyrkin@mcins.com)

Capacity:

\$5 Million Per Project

\$10 Million Aggregate

## **References**

---

### **Sundt Construction, Inc.**

Rob Foster  
1660 Hotel Circle North  
Suite 400  
San Diego, CA 92108  
(619) 321-4800

### **Comren, Inc.**

Jamie Markar  
18321 Ventura Blvd  
Suite 600  
Tarzana, CA 91356  
(818) 718-7500

### **Long Beach Unified School District**

Terry Cormack  
1515 Hughes Way  
Long Beach, CA 90810  
(562) 997-8000

### **Newport Mesa Unified School District**

Bob Lombard  
2985 Bear Street  
Costa Mesa, CA 92626  
(714) 424-5000

### **Dignity Health – St. Mary Medical Center**

James Kono  
1050 Linden Avenue  
Long Beach, CA 90813  
(562) 491-9000

### **VA Greater Los Angeles Healthcare System (GLA)**

Ben Spivey  
11301 Wilshire Blvd.  
Bldg. 218, Room 308  
Los Angeles, CA 90073  
(310) 478-3711

### **Aerojet Rocketdyne**

Vic Saba  
8900 De Soto Avenue  
Canoga Park, CA 91304  
(818) 586-1000

### **Food Pro / Sunkist**

Mark Washburn  
14131 Riverside Drive  
Sherman Oaks, CA 91423  
(408) 712-3885

### **Balfour Beatty Construction Company**

Tim Younker  
750 3<sup>rd</sup> Street  
Robbins AFB, GA 31098  
(530) 870-8352

### **Balfour Beatty Construction Company**

Brian Y. Clark  
9999 West Air Commando Way  
Clovis, NM 88101  
(703) 424-6362

### **City of Newport Beach**

Iris Lee  
1770 West Balboa Blvd.  
Newport Beach, CA 92663  
(949) 644-3323

### **Southern California Gas Company**

Tim Bomberger  
831 Howard Avenue SC8281  
Montebello, CA 90640-2598  
(818) 389-5597



# Key Projects

## CSUMB Former Military Housing BIG Demolition Phase 2, Seaside, CA

### LOCATION:

6<sup>th</sup> Avenue @ Intergarrison, Seaside, CA

### SIZE:

-Asbestos Abatement of 4 Buildings, 3 story, including the use of 40,000PSI power washing equipment. In excess of 210,000sqft of abatement.

-Over 210,000 square feet of large, 3 story commercial concrete structure demolition.

-Over 70,000 square feet of concrete basement and footing demolition

-Over 250,000 square feet of asphalt parking demolition

-Over 11-acres of site clearing and grading

### OWNER/DEVELOPER:

California State University Monterey Bay

### ABOUT THIS PROJECT:

Abandoned military buildings – decaying reminders of the campus’s Fort Ord Legacy. Many of the former military buildings have been repurposed, others are unusable because of their age, condition, cost-prohibitive abatement issues, or non-compliance with current building codes and accessibility standards. The demolition allows for continued campus growth opportunities.

### CSU MONTEREY BAY - PHASE 2 SITE DEMOLITION AND LEVELING CITY OF SEASIDE, MONTEREY COUNTY, CALIFORNIA





# Key Projects

## TOWER 180 HIGH RISE PROJECT SAN DIEGO, CA

### LOCATION:

1010 2<sup>ND</sup> Avenue, San Diego, CA

### SIZE:

-\$5+ million

-Asbestos and Lead Abatement,  
Interior Demolition of 25 Story High  
Rise Office Bldg and 8 Story High  
Rise Bldg.

-Over 360,000 square feet of  
commercial office / retail space.

-Heart of downtown San Diego, CA  
on .69 acre site.

### OWNER/DEVELOPER:

Hammer Ventures

### ABOUT THIS PROJECT:

The Tower was built in 1963,  
renovated in 1987. Purchased by  
Hammer Ventures in 2017. At time  
of purchase nearly half of the  
360,000 square feet was leased by  
the City of San Diego. UEI was  
originally hired to remove asbestos  
containing exterior curtain wall by  
use of swing stage, but due to  
continued safety record of UEI the  
project continued to grow into full  
floor abatement and demolition,  
main lobby abatement and  
demolition, lead abatement,  
escalator demolition, and more all  
while maintaining multiple occupied  
floors.





# Key Projects

## FORMER OLD WINERY ABATEMENT AND DEMOLITION, CLOVIS, CA

### LOCATION:

3495 Clovis Ave, Clovis, CA

### SIZE:

-Asbestos Abatement of 9 Buildings, including roofing abatement of partially burned, 40,000 square foot building.

-Over 220,000 square feet of large commercial concrete structure demolition

-Over 40,000 square feet of large wood structure demolition

-Over 260,000 square feet of foundation demolition

-Over 250,000 square feet of asphalt demolition

-60-foot high Concrete Tower Demolition

-Over 16-acres of site clearing and grading

### OWNER/DEVELOPER:

City of Clovis

### ABOUT THIS PROJECT:

The Clovis winery opened in 1912 and was one of the largest wineries in California at the time. The 16.56-acre site contained 9 commercial buildings, large asphalt parking areas, 10,000 gallon aboveground storage tank, and several underground storage tanks. The site also required finish grading across the entire 16.56-acres.

